



DuraShrink®

Our Solution for Standard and Eco-Friendly Barrier Shrink Bags



► For fresh, attractive product at delivery - Winpak has your packaging needs covered with DuraShrink® RS, RSEV, RM, GC and FP

DuraShrink® Product Type:

- RS** - Regular Boneless bags for meat and cheese
- RM** - Red Meat bags for fresh boneless red meat for retail or further processing
- RSEV** - Ecofriendly regular boneless bags for meat and cheese, using EVOH for barrier
- GC** - Gassy Cheese bags for cheese that releases gases during aging
- FP** - Nonbarrier bags for fresh poultry applications

Enhanced Performance Properties:

- Balanced Shrink Performance
- Durability
- Exceptional Contact Clarity
- Superior Preservation of freshness
- Up to 10 color printing available for all Durashrink®

► The Winpak Advantage

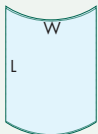
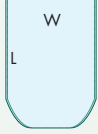
DuraShrink® maintains a superior shrink performance by balancing a high shrink rate with a low shrink force. The bags shrink tightly to the product shape, creating a wrinkle free package with the product's original shape remaining intact. In addition, bag tails are dramatically reduced.

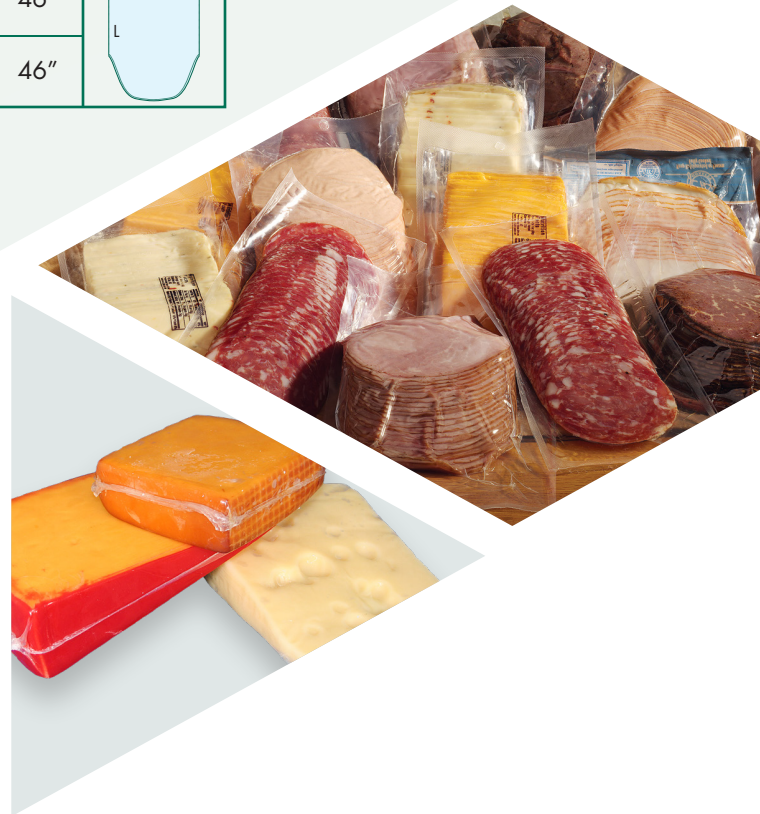
DuraShrink® offers superior oxygen and water vapor barrier properties to preserve product freshness and shelf life even in wet conditions. Barrier properties are maintained throughout the shrinkage process assuring product freshness.

With low temperature shrinkage, fresh meat color consistency is improved by reducing color degradation and purge. Product integrity is improved by a higher transparency and low haze after shrinking. This results in a more attractive retail presentation of product packaged.

DuraShrink® RSEV eliminates the use of PVdC by replacing it with EVOH, providing a superior barrier in an Eco-Acceptable product. EVOH reduces the impact of contaminants in a recycling system and eliminates the release of known carcinogens from possible incineration when processing waste. All of the performance attributes of the DuraShrink® product line are maintained or improved in this sustainable product offering.



Shape Code	Shape Description	Taped or Loose	Min. Width	Max. Width	Min. Length	Max. Length	Bag Shape
RBS L	Round Bottom	Loose	7"	22"	8"	46"	
RBS T	Round Bottom	Taped	7"	22"	8"	46"	
SSS L	Straight Side	Loose	3.5"	15.5"	5"	18"	
SSS T	Straight Side	Taped	3.5"	15.5"	5"	18"	
CSS L	Curved Side	Loose	3.5"	15.5"	6"	18"	
CSS T	Curved Side	Taped	3.5"	22"	6"	18"	
SBS L	Straight Bottom	Loose	7"	22"	8"	46"	
SBS T	Straight Bottom	Taped	7"	22"	8"	46"	
BBS L	Bullet Bottom	Loose	7"	21"	8"	46"	
BBS T	Bullet Bottom	Taped	7"	21"	8"	46"	



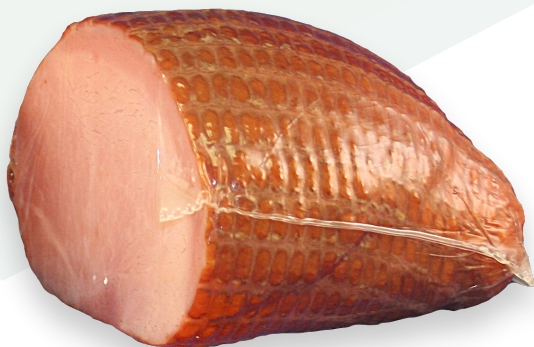
How to Order:

Item Description :

W x L Type Shape
Print Design

Example :

7 x 14 RS RBS T
Fred's Turkey Roast



TOTAL PACKAGING SOLUTIONS

www.winpak.com